

COASTAL  
GALLERY  
CONTEMPORARY ART & DESIGN



Exhibition Start Date: Saturday 19th August 2017  
Exhibition End Date: Monday 28th August 2017  
Location: ArtSway Station Road Sway Hampshire SO41 6BA  
Cover Image: Stephen Powell 'Soul Mining 1' mixed media 2017



COASTAL GALLERY  
AT ARTSWAY 2017



# COASTAL GALLERY LYMINGTON

Coastal Gallery, Lymington, is a touchstone for exceptional and unusual contemporary art and design. Working with both emerging and long-established artists, the gallery specialises in collecting modern and contemporary art with an intrinsic life - enhancing value. Coastal Gallery champions painters, sculptors and designers, based locally and in London, who display outstanding talent, creativity and technical expertise in their work.

The Coastal Gallery collection is curated by Stewart Mechem and Bev Saunders. Together, they bring years of experience working in the art, fashion and design worlds. With a keen eye for contemporary design, and a thorough knowledge of what's trending on the broader art and design market, Bev and Stewart have an instinct for sourcing the best range of artwork for each and every client. Coastal Gallery's aim is to excite and inspire with an ever-changing selection of painting, sculpture, ceramics and jewellery.

The gallery also features an unusual collection of art-inspired gifts including stunning abstract cashmere scarves, colourful silk pashmina and quirky tote bags - inspired by modern artists of our time so you can be sure of looking on-trend even when popping to the shop. Visit us now and enjoy a sneak preview of our artists' latest work and new arrivals !



Gallery Address:

Coastal Gallery, 4 Southampton Road  
Lymington, Hampshire SO41 9GG  
(Opposite Waitrose)

Gallery Opening:

9.30am - 4.30pm  
(Sunday & Monday by appointment)

Gallery Contact:

01590 680000  
mail@coastal-gallery.co.uk  
www.coastal-gallery.co.uk

Follow Coastal Gallery:

Stewart Mechem

07973 287666

Bev Saunders

07788 153189

Twitter.com/Coastal\_Gallery

Facebook.com/CoastalGallery

Instagram.com/coastalgallerylymington

Pinterest.com/CoastalGallery

YouTube.com

## COASTAL GALLERY AT ARTSWAY 2017

SAT 19TH – MON 28TH AUGUST 2017 – FREE OF CHARGE & OPEN DAILY 10AM – 5PM  
ARTSWAY STATION ROAD SWAY SO41 6BA

Situated in the very heart of the beautiful New Forest, 'Coastal Gallery at ArtSway 2017' brings together the best collection of modern artwork by locally based contemporary artists, new emerging talents, and established artists of international acclaim. Organised and curated by Coastal Gallery, Lymington, the event will attract a wide-ranging audience, from design-savvy and art-loving New Forest residents, businesses and visitors; to artists, designers, collectors and journalists.

A series of artists' talks and workshops take place throughout the exhibition, and an exhibition 'pop-up' shop is selling an eclectic collection of cards, prints, ceramics and accessories. This includes exclusive handmade jewellery by Jo Vane, limited edition prints by Bev Saunders and Stewart Mechem, ceramics by Jackie Giron and Arek Nowicki, luxurious scarves by English Weather and candles and room diffusers by the Spitalfields Candle Company.

A photograph of the ArtSway 2016 exhibition space. It shows a gallery with white walls and a tiled floor. Several artworks are displayed on white pedestals and on the walls. The lighting is bright and even.

Coastal Gallery and Hampshire Open Studios are hosting a VIP Private View to launch the exhibition at ArtSway on Friday 18th August 2017. The Private View offers sponsors high-profile association with a prestigious and creative event, coupled with extensive branding and hospitality opportunities.

Contact Coastal Gallery in August for more details about artists' talks and workshops. Through innovative 'listening workshops', Sian Hutchings, our exhibition invigilator, is creating a site specific sound track for the show. Sian is a Fine Art graduate from AUB.

Exhibition Address:

ArtSway, Station Road, Sway, Hampshire. SO41 6BA

Exhibition Information:

01590 680000  
mail@coastal-gallery.co.uk  
www.hampshireopenstudios.org.uk  
www.artsway.org.uk

Parking:

Parking at ArtSway for disabled visitors only.  
Alternative parking at Jubilee Field Sports Ground.

## AMANDA MANN

PATRON'S INTRODUCTION

August 2016 saw the launch of a major new exhibition, 'Coastal Gallery at ArtSway' – the culmination of an innovative collaboration between Coastal Gallery and Hampshire Open Studios.

Building on the success of last year's show, I am delighted to be Patron of 'Coastal Gallery at ArtSway 2017'. I know we can all look forward to an inspiring visual feast of artwork to buy and to enjoy in our homes for years to come.

There's such a wealth of creative talent to be found in this beautiful area, and Bev and Stewart at Coastal Gallery have brought together an exciting and diverse collection of contemporary art, sculpture and ceramics. This year, Coastal Gallery's artists and designers are joined by guest artists from London.

A portrait of Amanda Mann, the Patron of the exhibition. She is a woman with curly blonde hair, smiling at the camera.

Thank you to all the local sponsors who have generously contributed to the exhibition, to Lesley Meaker, the driving force behind Hampshire Open Studios, and to Sir Nigel Shadbolt, Chairman and co-founder of The Open Data Institute, London, for supporting the 'Data as Culture' Gallery – an exciting and innovative element of this year's exhibition.

Finally, I would like to thank all the artists and designers for participating in the 2017 show, and send my very best wishes to everyone involved for a successful and inspiring event.

Enjoy!  
Amanda Mann

The logo for Hampshire Open Studios, featuring a colorful circular design with the text 'HAMPSHIRE open studios'.

## LESLEY MEAKER

CREATIVE DIRECTOR HAMPSHIRE OPEN STUDIOS

I am proud to introduce year two of Hampshire Open Studios' collaboration with Coastal Gallery. Curated by Coastal Gallery, the show brings together a wonderful collection of modern artwork by locally based contemporary artists, new emerging talents and established artists of international acclaim.

The exhibition includes works by Martyn Brewster, Julie Collins, Gohar Goddard, Biddy Hodgkinson, Stephen Powell, Jennie Slater, Ingrid Sterling, Michael Turner and Chris Whittaker; and a stunning collection of ceramics by Jackie Giron and Arek Nowicki. This year, on the theme of 'Data as Culture', Gallery Three features digital film, video and prints by two leading digital artists – the acclaimed 'pop icon', Duggie Fields and pioneering TED Senior Fellow, Julie Freeman.

A portrait of Lesley Meaker, the Creative Director of Hampshire Open Studios. She is a woman with long blonde hair, smiling at the camera.

The show offers a unique opportunity to see and purchase the work of leading artists and designers, some of whom have not participated in Open Studios before - a rare chance to experience, and to take home, some amazing artwork - one giant open studio, and a creative cornerstone of Hampshire Open Studios 2017.

Lesley Meaker

Acknowledgements:

Design:

Tinstar Design  
www.tinstar.co.uk

Editorial:

Tory Harte

Print:

The Newspaper Club  
www.newspaperclub.com

The logo for hArt, featuring a stylized 'h' and 'Art' in a circular design.

## ANNIE JEFFERY

CHAIR OF TRUSTEES hArt

hArt (Hampshire Art for Recreation and Therapy) is thrilled to be supported by Coastal Gallery and to benefit from this prestigious exhibition. Many of Coastal Gallery's artists have offered beautiful artwork for a raffle, with all proceeds coming to hArt.

Last year, the raffle brought us the sum of just over £1,800. This has helped to fund a weekly drop-in session for adults with mental health issues. The sessions are open to people aged eighteen and over, and are a lovely opportunity to try new art materials and techniques, to discover new interests and to meet new people.

A portrait of Annie Jeffery, the Chair of Trustees of hArt. She is a woman with short blonde hair, resting her chin on her hand and smiling.

The group runs every Wednesday at the Pennington WI Hall, Ramley Road, Pennington. Details are on our website **www.hart.works**.

Annie Jeffery

'Coastal Gallery at ArtSway 2017' is part of Hampshire Open Studios' programme of events  
www.hampshireopenstudios.org.uk  
www.artsway.org.uk

Tinstar Design  
www.tinstar.co.uk

Tory Harte

The Newspaper Club  
www.newspaperclub.com

2

3



# EXHIBITING ARTISTS



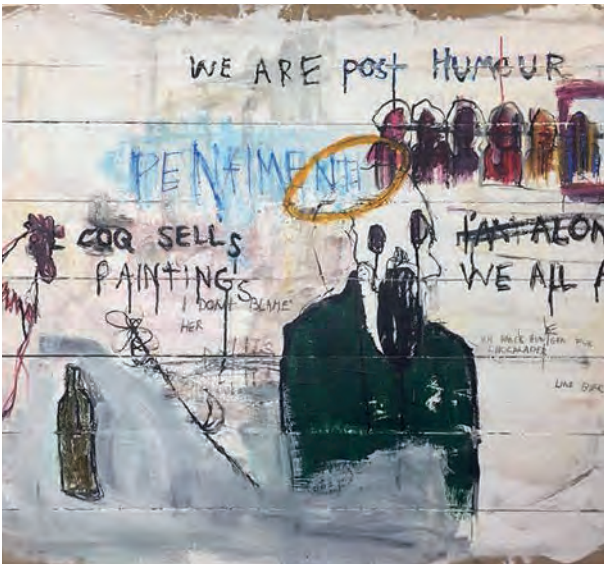
## MARTYN BREWSTER

Martyn Brewster is one of Britain's foremost abstract artists and print makers, and has exhibited nationally and internationally for thirty years. Earlier this year, Martyn's work was shown in New York. He is currently planning a major London solo show for 2018. Martyn lives and works on the Dorset coast and his work is inspired by the sea and the local landscape. Through his dynamic layering of vibrant colours, Martyn beautifully captures the mood and sensation of a place.



## JULIE COLLINS

Julie is a highly acclaimed watercolour artist based at Milford-on-Sea. She starts each day walking along the sea wall and taking inspiration from our beautiful coastline. Julie's work often uses both watercolour and acrylic. She pushes the boundaries of the paint to create large- scale abstract paintings that convey the beauty and temporality of the landscape. Her works are delicate and full of texture and light.



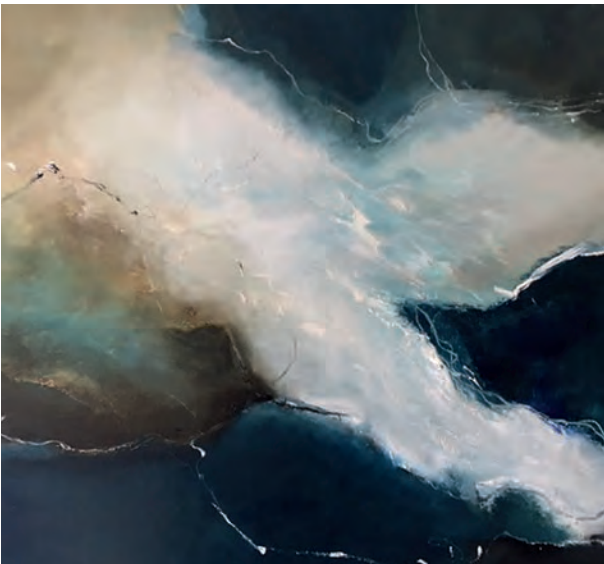
## SAMUAL KAI KESSEL

Currently a fine art student at AUB, Samuel has been much influenced stylistically by Basquiat and Rauschenberg. His paintings are extremely emotive, and in many cases, explore visual language of grief and loss. He has a huge commitment to developing his work and his enthusiasm for expressionism and painterly techniques make him a fresh and exciting new contributor to Coastal Gallery at ArtSway.



## STEPHEN POWELL

Stephen displays an extraordinary talent for bringing together bold shapes, hard edges and an expressively wide range of mark making skills in a coherently beautiful whole. Working from his studios in the New Forest, his intention is to paint things that exist but can't be seen, such as a sound or a feeling. He reacts to the colour and composition as it confronts him on the canvas, and feels that painting and the desire to leave a mark is an instinctive action.



## JENNIE SLATER

Jennie Slater's seascapes are charged with energy and movement, perfectly evoking the power and beauty of the sea. With a varied and confident use of colour, Jennie's works take the viewer out into the wave. It is almost possible to feel the spray on your face as you stand face to face with one of her works. Jennie's paintings have been widely exhibited in London and the South East, including Cork Street, the Royal College of Art and the Affordable Art Fair.



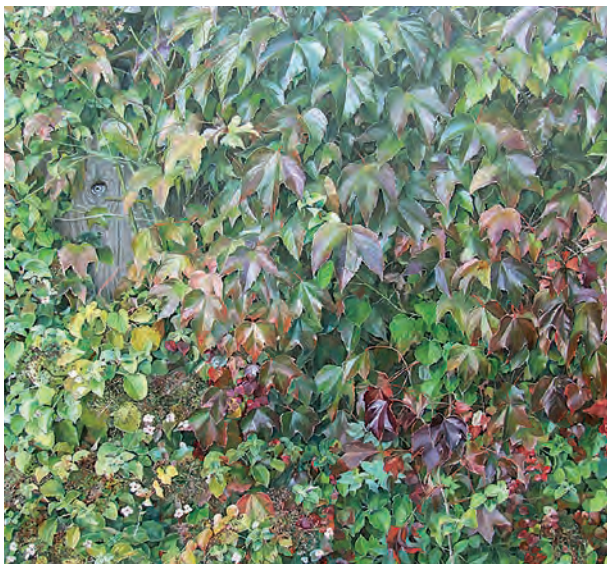
## BIDDY HODGKINSON

Brought up on a farm, Biddy experienced the constant cycle of birth, life and death. A fascination with this still holds, and Biddy's inspiration is drawn from close observation of life cycles in nature. Using painterly and alchemic techniques, Biddy captures the transient beauty and luminosity of natural decay. Rich in colour, the resulting abstract canvases have intriguing tactile and sculptural qualities.



## GOHAR GODDARD

Gohar was born in Iran and spent her childhood years in France and Pakistan, soaking up the diverse visual language of those cultures. Initially a ceramic artist, Gohar has a love of beautiful textiles and in 1985 opened a luxury yarn store in Kensington. Having turned her creative talents towards painting she takes inspiration from the works of Matisse, Klee and Tapes.



## CHRIS WHITTAKER

Chris is a resident of Lymington whose work has been widely exhibited in London and internationally. Selected finalist at the 2010 National Open Art Competition and winner of the Worshipful Company of Painters Stainers prize in 2008, his work provides a uniquely detailed view of the everyday. Chris likes painting foliage and 'the chaotic, messy bits of nature – "the bits people walk past or over without noticing"'. Working in oils and at life size, Chris has a meticulous eye for detail and a wonderfully quirky view of the world.



## JACKIE GIRON

Jackie Giron is a local ceramic artist based in Pilley. Jackie takes inspiration from the local landscape, geological strata and the ever-changing skies and light of the South coast. Her bowls, inspired by the work of Lucie Rie, have been described as "Little Jewels". Jackie applies layers of coloured glazes which pool at the bottom of her bowls leaving a deeply coloured centre of melted glass reminiscent of rock pools on a bright sunny day.



## AREK NOWICKI

Born in Poland, Arek now lives and works in the New Forest. His singular approach to ceramics as an art form results in vessels and bowls that have a scale and energy that demand attention. Arek builds each piece by hand to create remarkable sculptural forms. He uses crystalline glazes to create beautifully delicate textural layers and colour contrasts. Using rich blues, ochres, greens and greys inspired by nature, Arek's glazes become fluid art forms in themselves. His aim is to challenge people's pre-conceived notions of what a jug or vase is.



## MICHAEL TURNER

Michael creates impressive and dynamic sculptures from highly polished stainless steel. From his studios just outside the village of Sway in the New Forest, emerge all manner of gloriously worked fantastical creatures - from larger than life horses and lions, to insects and fish. Where possible Michael uses reclaimed marine grade stainless steel from local boatyards.



## JO VANE

Jo has a background in Art History but, in 2007, discovered a love of making jewellery. From her studio in Milford-on-Sea, Jo creates bespoke designs and unique handmade collections from silver, gold and semi-precious stones. Jo draws inspiration from the forest and coastline. Themes such as the play of light on the sea, erosion and natural cycles within a landscape recur in Jo's beautiful work. A recent and exciting departure is Jo's experimentation with larger scale sculptural forms.



## INGRID STERLING

Ingrid works in stainless steel, bronze and Perspex to create her bold and challenging sculptures. Often Ingrid will use bronze to depict the fluidity of line she feels better represents the female form, while stainless steel with bright flashes of bold colour is used to represent the male form. Ingrid is fascinated with the human form, and the variety of her work reflects this multi-faceted subject matter. Ingrid has exhibited her work throughout the UK, Australia, the USA and her native South Africa.



SPECIAL FEATURE:

# DATA AS CULTURE

## FOREWORD BY SIR NIGEL SHADBOLT

Having thoroughly enjoyed 'Coastal Gallery at ArtSway 2016', I am delighted to support the second year of this local and innovative collaboration between Coastal Gallery and Hampshire Open Studios. ArtSway is a wonderful contemporary arts venue in the heart of the New Forest, and this year's 'Data as Culture' element of the 2017 Show is a truly exciting development. It is the ideal chance to bring together two very important elements of my life - a love of the area, having lived in Lymington for many years, and my role as Chairman and Co-founder of the Open Data Institute (ODI) in London [www.theodi.org](http://www.theodi.org).

Sir Tim Berners Lee and I founded the ODI to secure the work we had done to ensure that important and essential data is openly available to everyone - from the data that helps you choose a school or GP's surgery, to

the data sets that power the apps on your smart phone.

The Open Data Institute has helped foster start-ups to build businesses using open data, and trained thousands of people in how to use open data. The Institute has helped shape government policy such that the UK is seen to be at the forefront of open data internationally. From the outset we were determined to demonstrate that data is not the province of geeks and techies – that it is a great medium to inspire creativity in all fields.

The ODI 'Data as Culture' programme is one way we connect the creative worlds with digital technology. An event like 'Coastal Gallery at ArtSway 2017' enables us to introduce a new audience to the ODI's work - geographically and demographically - and show how data and digital media can be used creatively.

One of the ODI's slogans is 'knowledge for everyone', and it is the ODI's mission to ensure that the data driven world of the future is an equitable one, one that works for everyone.



Similarly, Stewart Mechem and Bev Saunders, organisers of 'Coastal Gallery at ArtSway 2017', and Lesley Meaker, the driving force behind Hampshire Open Studios, are passionate about bringing the best of art and design to the people of Hampshire and beyond - 'art and design for everyone'.

**Professor Sir Nigel Shadbolt FRS FREng**  
Principal, Jesus College, Oxford



## DATA AS CULTURE GUEST ARTISTS

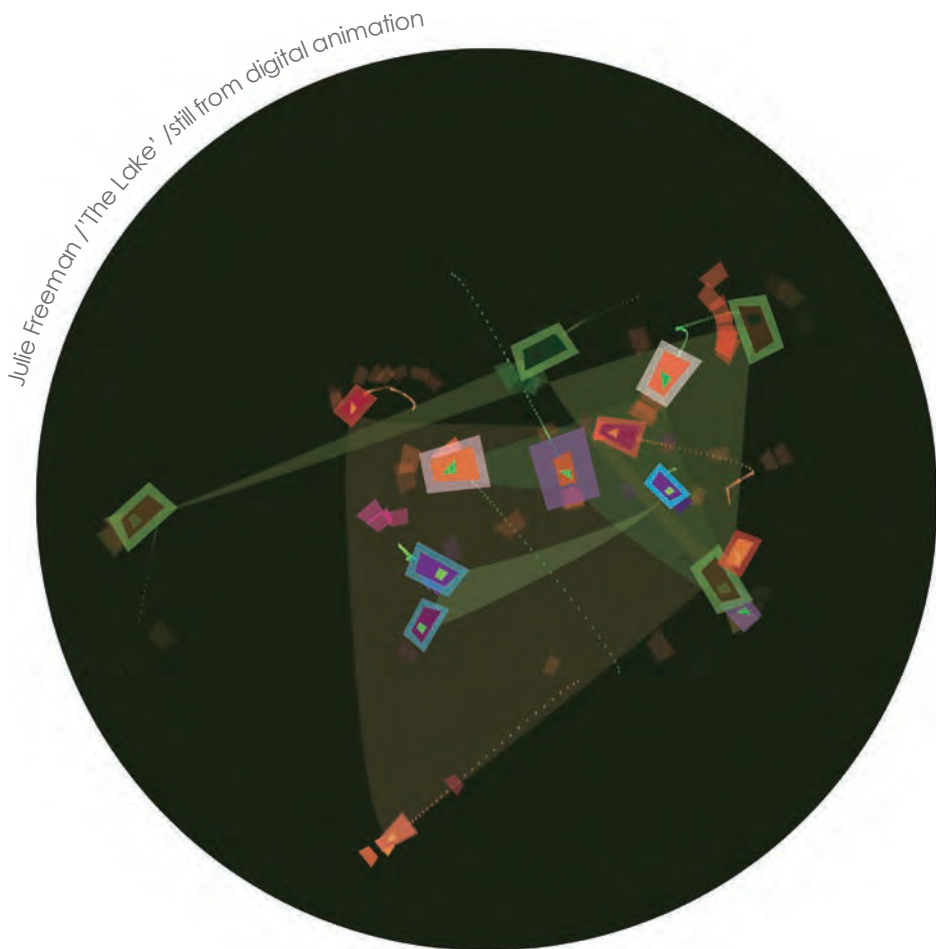
Under the umbrella of 'Data as Culture', supported by the Open Data Institute, London, Coastal Gallery is delighted to welcome acclaimed digital artists, Duggie Fields and Julie Freeman, to this year's show. Their work is featured in Gallery Three.

### JULIE FREEMAN



Julie Freeman translates processes and data from natural sources into kinetic sculpture, physical object, graphic image, sound composition and animation. Her work explores the relationship between science and the natural world; questioning the use of technology in how we experience nature.

Julie is founder of Fine Acts, a TED Senior Fellow and Art Associate at the Open Data Institute in London. Julie played a key role in establishing the ODI's innovative 'Data as Culture' programme.



Julie Freeman 'The Lake' / still from digital animation

### DUGGIE FIELDS

Duggie Fields trained at Chelsea School of Art in the 1960s, and his iconic work includes video, sound, digital imagery and hand-painted canvases.

Working from his atelier in Earls Court, Duggie Field's art is Post Modernism at its finest. Influenced by Jackson Pollock, Mondrian and the colourful art of comic books, his hard-edged post-Pop art is trend setting. Duggie's part in the gender equality campaign, '#freethenipple', and corresponding artwork, has become synonymous with his name. He has displayed an incredible talent for moving with the times and these days considers himself largely a digital artist, saying that the computer mouse is 'my hand, my eye, my mind'.

Duggie's work is featured in 'Their Mortal Remains', the Pink Floyd exhibition at the V & A, London - runs until 1 October 2017.

Duggie Fields 'So Cool'



## PARTNERS AND SPONSORS

Coastal Gallery would like to thank the Open Data Institute, London, for its generous support of the 'Data as Culture' element of the exhibition.

Bev and Stewart would also like to thank all the sponsors of 'Coastal Gallery at ArtSway 2017', especially our lead sponsor, Augmented Intelligence - a multi-disciplinary consultancy specialising in open data, artificial intelligence, computer and web science.

Thank you to PKF Francis Clark Accountancy for supporting the exhibition and providing an excellent accountancy service to Coastal Gallery.

Thank you to Red Herring Events Management for providing such wonderful event staff and delicious canapes.

Thank you to Tinstar Design for designing the exhibition newspaper and design work for Coastal Gallery; and to Hampshire Style Magazine for their support as media partner.

Thank you to Ellis & Co for insuring the exhibition and Coastal Gallery.



Thank you to fellow Lymington businesses, Glover and Hobbs, Solent House Dental Practice, Stanwell House Hotel and Stanwells Boutique for supporting both the exhibition and Coastal Gallery, and for being great 'neighbours'.

'Coastal Gallery at ArtSway 2017' would not have been possible without everyone's generosity, especially that of Lesley Meaker, Creative Director of Hampshire Open Studios. We look forward to future creative collaborations.

AUGMENTED INTELLIGENCE LTD



HAMPSHIRE Style

Ellis & Co  
Insurance Services



STANWELLS

Stanwell House  
Boutique hotel & dining





Back Cover Image: Duggie Fields  
'London Dynamic Greeting' digital media 2017

Gallery Address:

**Coastal Gallery, 4 Southampton Road  
Lymington, Hampshire SO41 9GG**

Gallery Opening:

9.30am - 4.30pm (Sunday & Monday by appointment)

Gallery Contact:

**01590 680000**  
mail@coastal-gallery.co.uk  
www.coastal-gallery.co.uk

**Stewart Mechem**  
07973 287666

**Bev Saunders**  
07788 153189

Follow Coastal Gallery:

 [Twitter.com/Coastal\\_Gallery](https://twitter.com/Coastal_Gallery)  
 [Facebook.com/CoastalGallery](https://facebook.com/CoastalGallery)  
 [Instagram.com/coastalgallerylymington](https://instagram.com/coastalgallerylymington)  
 [Pinterest.com/CoastalGallery](https://pinterest.com/CoastalGallery)  
 [YouTube.com](https://youtube.com)